

84 Northfield Avenue, London, W13 9RR

020 8840 5151



Freehold / House - Terraced

Carlyle Road

£759,000

A beautifully presented Victorian house with a fantastic South-facing garden moments from the shops and eateries on South Ealing Road.

- Immaculately presented throughout
- Period features
- Victorian terrace
- Fantastic South-facing garden
- Two reception rooms
- Close to South Ealing tube



Freehold / House - Terraced

Carlyle Road, W5 4BL

£759,000

This characterful mid-terrace house has plenty of period charm and has been lovingly maintained by the current owners. Although this property is in immaculate condition, there is further potential to enhance the property, by extending both on the ground floor and into the loft space.

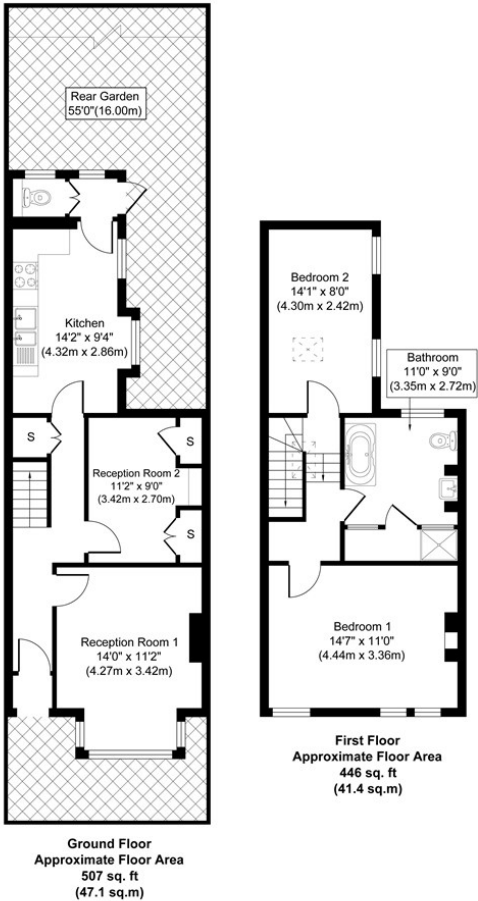
The ground floor comprises two reception rooms, both with stripped back original flooring and cornicing. The homely 'country style' kitchen/breakfast room has recently been updated, there's also a very useful downstairs cloakroom at the rear of the property. Doors from the kitchen lead to the beautifully kept and secluded South-facing garden, which is a real feature of the house.

Up onto the first floor there's two good size double bedrooms with the master benefiting from built-in wardrobes. Also on this floor is a large family bathroom with a huge walk-in shower and a roll top bath.

On this residential enclave known as 'Little Ealing' just a moments walk from Little Ealing, Mount Carmel and Ealing Fields schools and well placed for the local shops, café bars, restaurants and Piccadilly Line stations of South Ealing and Northfields.

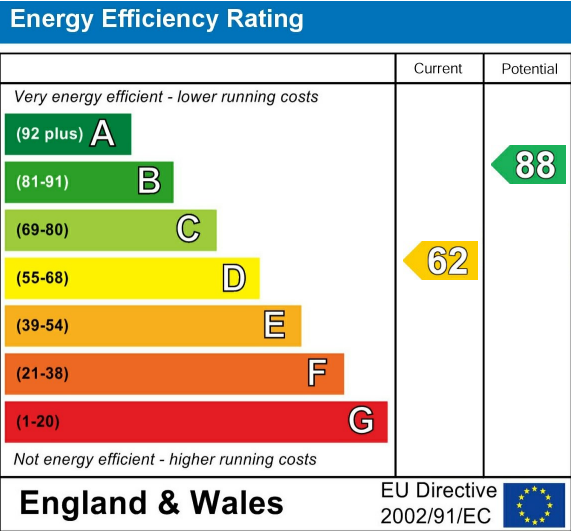


Carlyle Road Ealing, W5 4BL



Approximate Gross Internal Floor Area 953 sq. ft / 88.5 sq. m
Illustration for identification purposes only, measurements are approximate, not to scale.
produced by jcpgraphystudio.com

Energy Performance Graph



Call us on

020 8840 5151

northfieldsales@sintonandrews.co.uk

www.sintonandrews.co.uk

Agents Note: Whilst every care has been taken to prepare these particulars, they are for guidance purposes only. All measurements are approximate and are for general guidance purposes only and whilst every care has been taken to ensure their accuracy, they should not be relied upon and potential buyers are advised to recheck the measurements.